

The **Broadband Alliance of Santa Barbara County (Alliance)** formed in October 2021 to develop a regional broadband strategic plan through a partnership between the Santa Barbara County Association of Governments, County of Santa Barbara, and the cities of Buellton, Carpinteria, Goleta, Guadalupe, Lompoc, Santa Barbara, Santa Maria, and Solvang, the Santa Ynez Band of Chumash Indians, Broadband Consortium of the Pacific Coast (BCPC), and regional economic development organizations.

Broadband Alliance Strategic Plan

The plan will identify broadband internet infrastructure and affordability needs in Santa Barbara County.

The plan will be completed by the end of 2022.

Once the Plan is complete, the Alliance will seek funding opportunities for projects to improve internet access in homes, schools, businesses, healthcare, and facilities to high-speed internet countywide. It will also help improve disaster preparedness and encourage industry competition.

How you can help

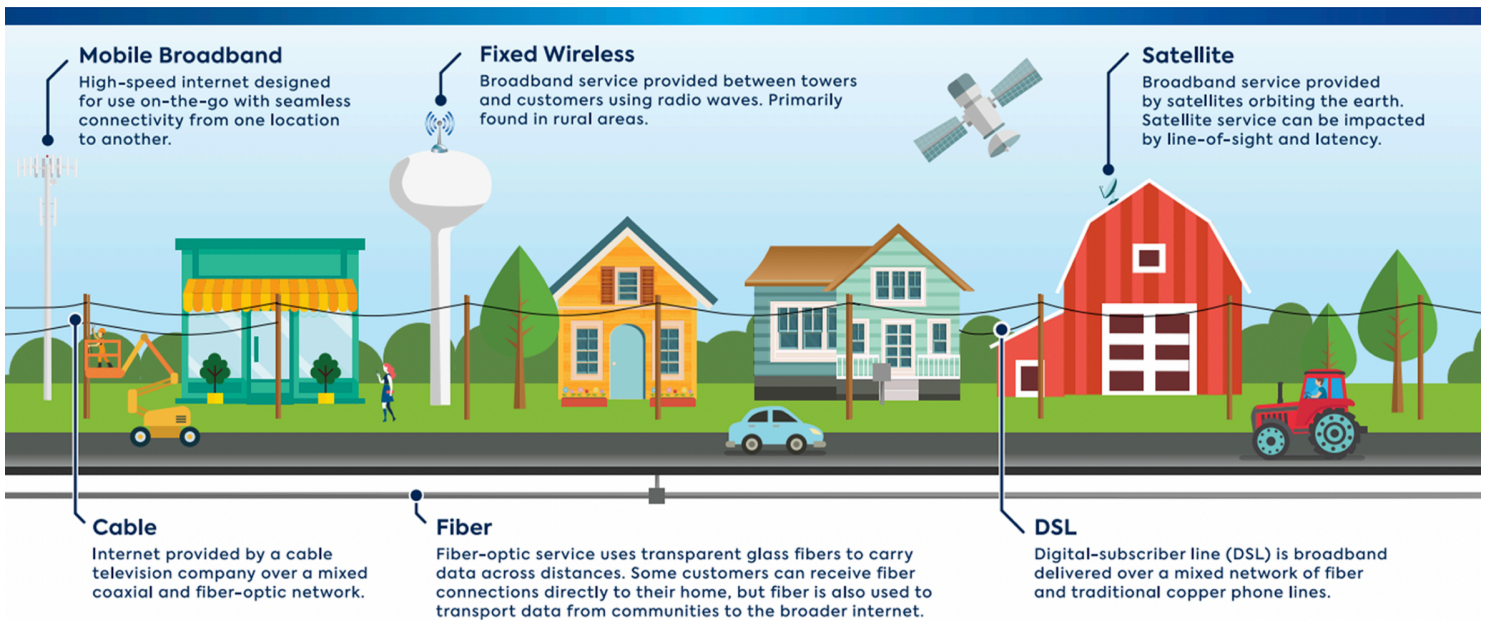
Please take a minute to complete a Santa Barbara County broadband internet needs assessment survey and speed test on a personal computer or laptop at home, work, or wherever you connect at www.sbcag.org/broadband

Information collected helps to improve affordable access to high-speed internet countywide. Privacy controls protect responses and anonymous participation is an option.

If you do not have internet, please call Santa Barbara County Association of Governments (SBCAG) at 1-805-961-8902 to report why you don't!

What is Broadband?

Broadband provides the fastest connections today, making it the most common type of residential internet service. Broadband is a type of high-speed internet connection that is always “on.”



Graphic: connectednation.org

FAQ and Resources

1. Why am I important to this project?

By taking the Santa Barbara County broadband needs assessment survey and speed test, you are helping to identify if your community has good, poor, no or unaffordable internet service. Your information along with many others will be added to a map to seek funding improve affordable access to high-speed internet countywide.

2. What is the Santa Barbara County Broadband Needs Assessment Survey?

This survey helps us learn about your specific needs and experiences regarding internet access. Your response will help inform planning efforts to increase high speed internet access to communities that need it most within Santa Barbara County.

3. What is the Santa Barbara County Broadband Speed Test?

The SB County Broadband Speed Test will collect data about your internet speed and create a map of the community that will help inform decision makers in their effort to seek funding to improve affordable high-speed internet in Santa Barbara County.

4. What is Broadband-For-All?

In December 2020, Governor Gavin Newsom signed historic legislation, **Broadband for All**, to advance the State's commitment to bring affordable access to high-speed internet service across California.

5. Is the Broadband Strategy Plan about 5G network technology?

No. The work of the Broadband Alliance of Santa Barbara County is not to advocate for one particular technology. The Alliance is focused on fiber optic cable infrastructure and affordability of high-speed internet across all of Santa Barbara County.

Broadband Words To Know

Bandwidth: Capacity of a broadband connection, often a synonym for data transfer speed.

Kilobit/Kilobyte: Kilobits per second (Kbps) is a measure of dial-up speed, where one Kb = 125 bytes. Kilobyte (KB) means 1,000 bytes and is a measure of storage capacity or data size.

Megabit/Megabyte: Megabits per second (Mbps or Mb) is a measure of transmission speed, with a 1Mb connection being able to transfer 1MB (megabyte/MB) of data in 8 seconds. Megabyte is a measure of the size of computer files or capacity. 1MB = 1,000 KB.

Gigabit/Gigabyte: Gigabit is a unit describing data transfer speed, usually per second (Gbps). Gigabyte describes the size of computer files and capacity. 1GB = 1,000 MB (megabytes)

Middle-mile: The segment of telecommunications network infrastructure that connects major telecom (often international) networks, national or core networks to users in homes, schools, government, and businesses.

Last mile: The final leg of a telecommunications network that delivers telecom services to end users.

Dark fiber: "Unlit" or unused optical fiber available for use in fiber optic communication.

Tell us about...your internet experience.

Take a survey & speed test on a personal computer or laptop at home, work, or wherever you connect at www.sbcag.org/broadband

If you do not have internet or access to equipment to take this test, please call Santa Barbara County Association of Governments (SBCAG) at 1-805-961-8902 to report why you don't!

